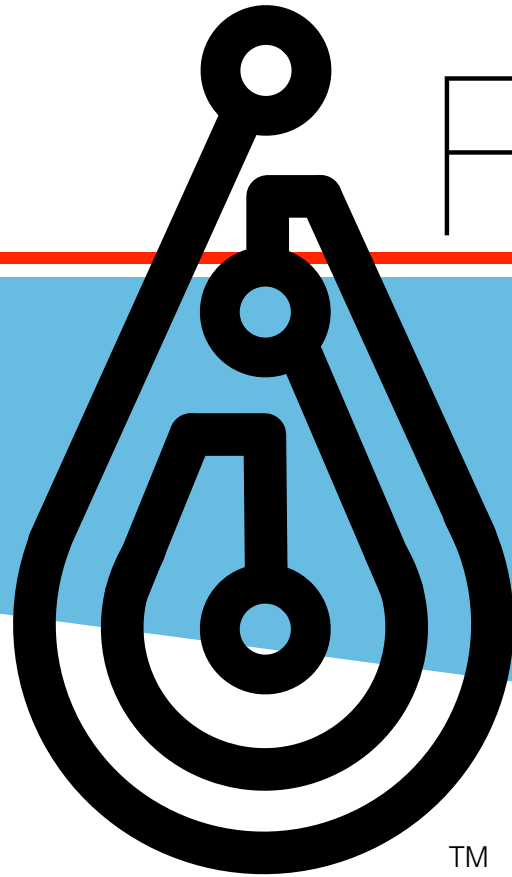


*“Protecting your property
with water data”*



Fluid

<http://fluidintell.com>

Intelligence

TM

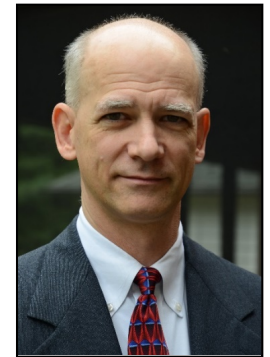
Kevin W. Goldstein, CEO 610.405.2698 - kevin@fluidintell.com

Chadwick A. Wingrave, CTO 540.392.1168 - chad@fluidintell.com

All information, data and content included within this pitch deck is considered confidential and proprietary to Fluid Intelligence LLC. Use of any such information, data, or content without the express written consent of Fluid Intelligence is strictly prohibited. Disclosure of this pitch deck or any part thereof should be properly restricted.

© Fluid Intelligence LLC, 2016; Confidential Information; All Rights Reserved

- Kevin W. Goldstein – Founder, CEO
 - Mechanical / Aerospace Engineering RPI; Graduate Studies Princeton University – Automatic Control System Design; Aerospace Engineer, Boeing Helicopters; Intellectual Property Attorney
- Chadwick A. Wingrave, Ph.D. – CTO
 - Computer Science, Virginia Tech; VR/AR/UX Research, Visiting Researcher, U. Central Florida, U. S. Florida & Dept. Veterans Affairs; Sr UX, Ford Motor Company; Full-Stack Developer



Water is Precious

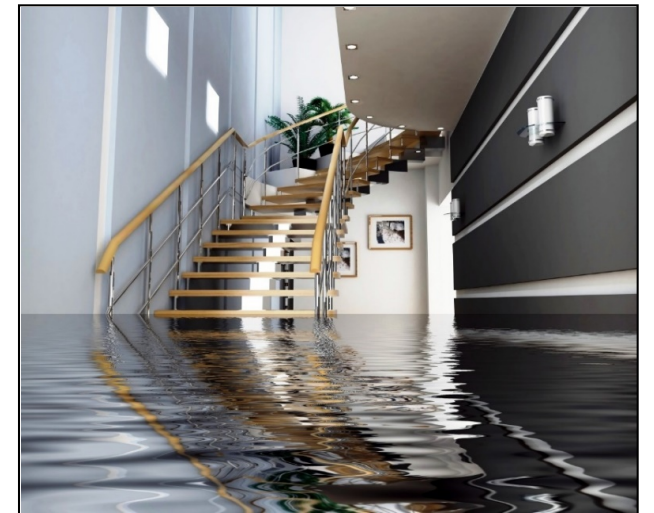
...but can be Destructive

- Personal property, some irreplaceable, damage due to water can be expensive and extensive
- > \$6 billion in insurance claims annually

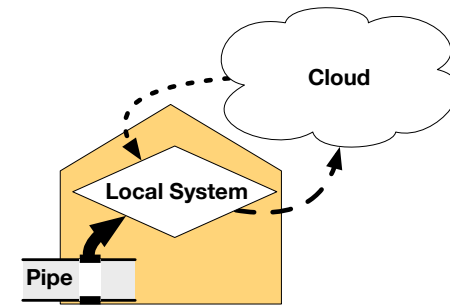


...and is often wasted.

- U.S. water infrastructure loses 25% before reaching a faucet
- Average US household wastes approximately 10,000 gallons each year (leaks, bad fixtures, ruptures, bad habits)

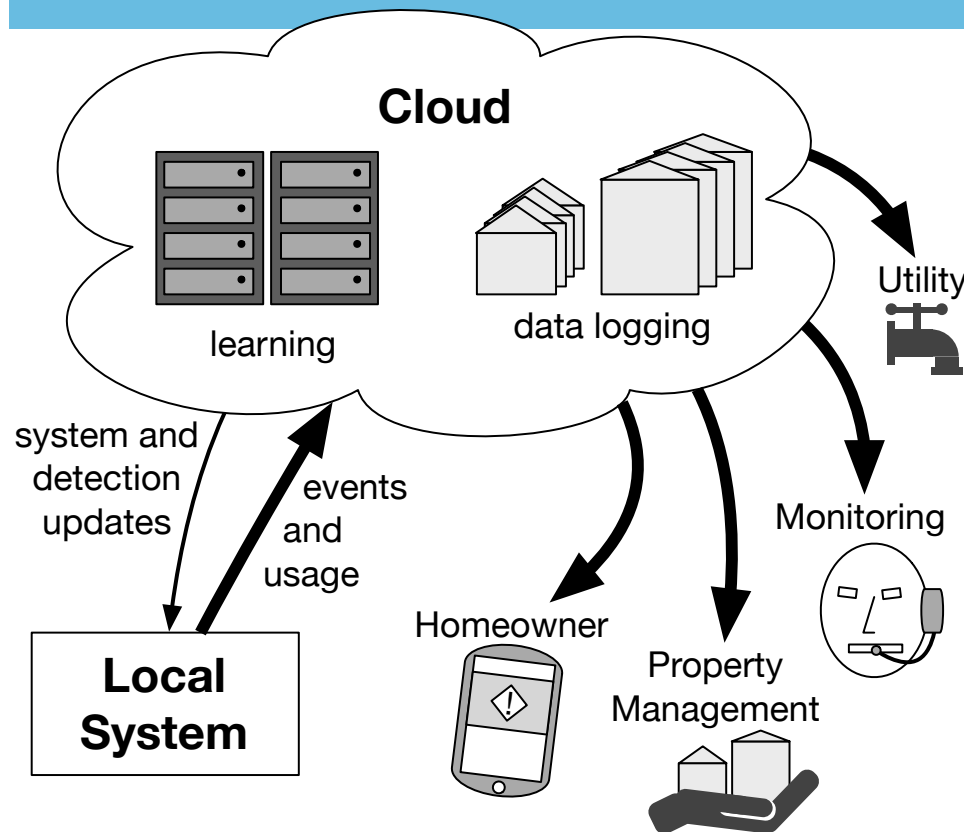


Our Approach, Our IP



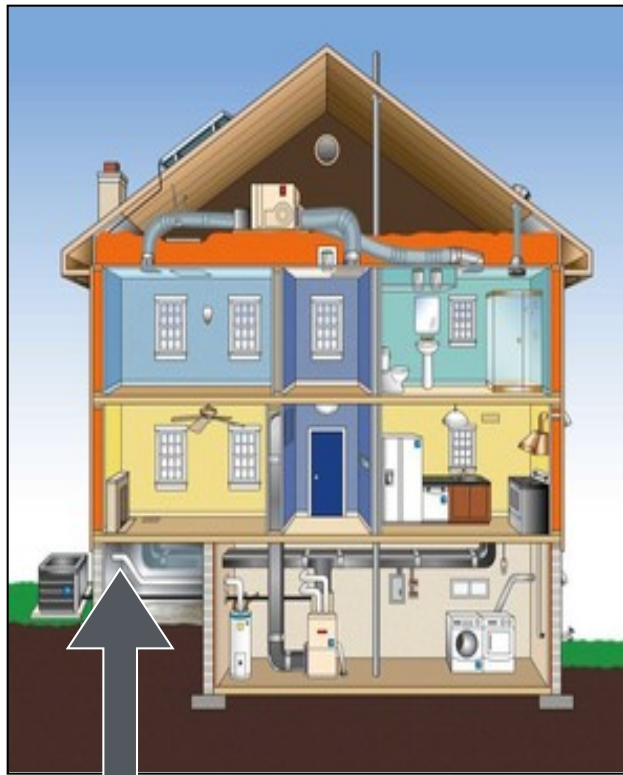
*When invisible data becomes visible,
people make better decisions.
When aware, they take control.*

*Patents pending
14/246,042
14/512,265
more coming...*

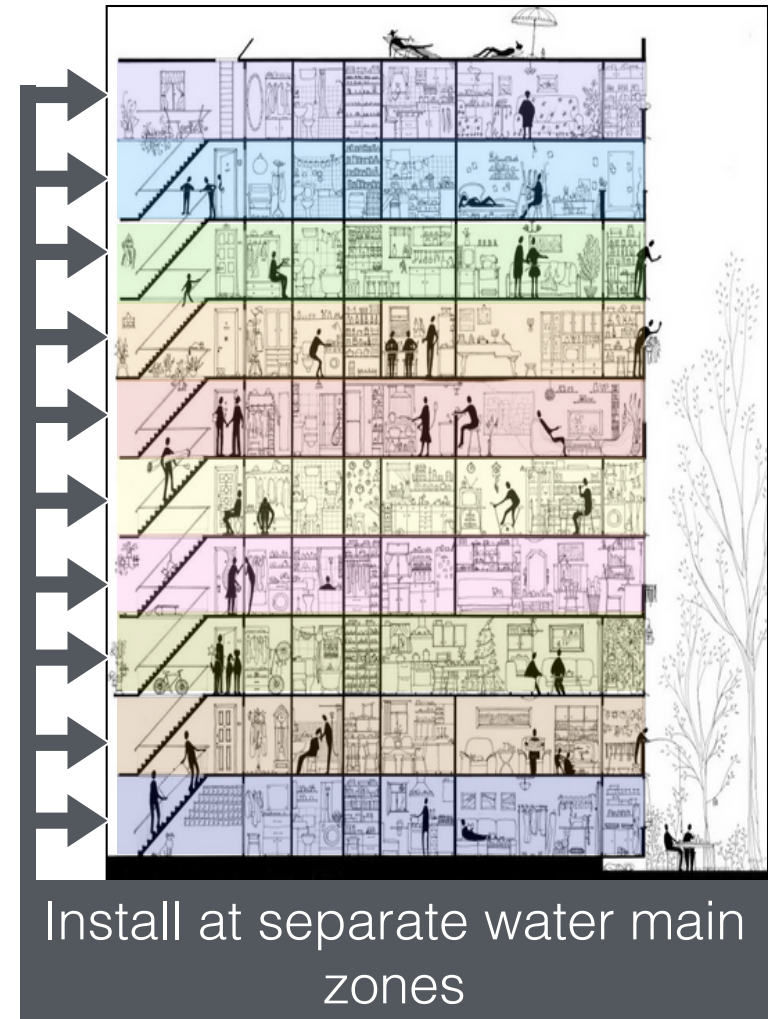


- Automatic 24/7/365 self-learning water flow monitor and control system
 - Identify water fixtures and occupant usage patterns
 - Alert notifications of abnormal events
- IoT and Cloud computation
 - Integratable with smart-phone, smart-home, smart-business wireless technology, security systems

Residential & Commercial Markets



Install at water main downstream
of water meter



Install at separate water main
zones

Current Efforts

- Continued algorithm refinement
- Strengthening IP protection
- Starting trial runs
- Building strategic partner relationships
- Funding